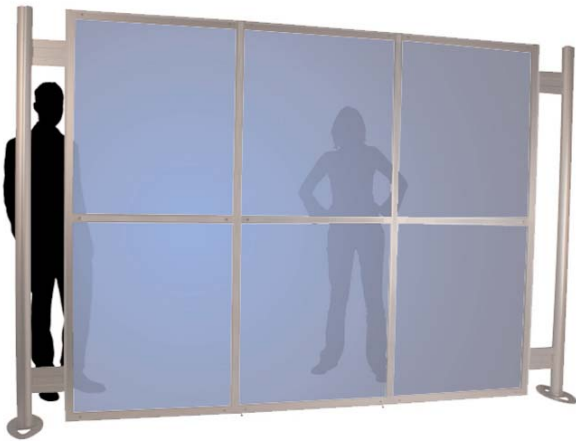


Linear Kit 6

Aluminium graphic frame ideal for printable rigid infill substrates or mag taped graphics.



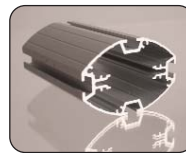
features & benefits

- Overall assembled size 2000mm (h) x 3100mm (w) x 400mm (d) approx
- Anodised aluminium construction
- Portable, easy assembly
- Available with round or oval profile post options
- Steel oval bases supplied as standard
- 450mm dia steel dome or thermoformed MDF base options also available
- Choice of two recommended graphic fixing options: Rigid infill or mag taped graphics
- Kits are supplied with steel tape pre-applied on one side ready to accept mag taped graphics

Post options



75mm round



75mm oval

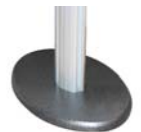
Base options



Steel oval supplied as std (weight 2kg approx)



450mm dia Steel dome extra cost option (weight 6kg approx)



Thermoformed MDF extra cost option (weight 0.5kg approx)

Recommended carry bag: LPB

Recommended carry bag: LPB1

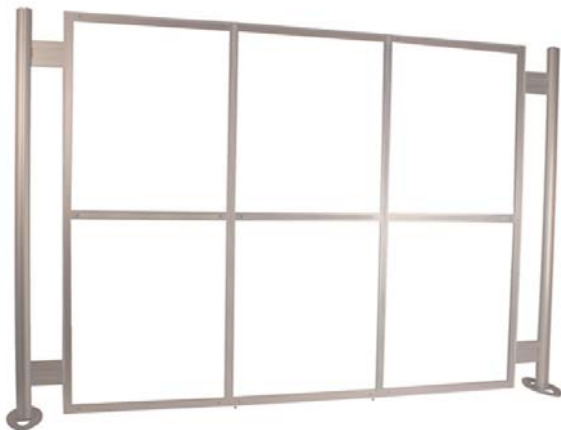
Graphic fixing options



Rigid infill



Mag taped



hardware & graphic specifications

Hardware dimensions (mm):

2000 (h) x 3100 (w) x 400 (d) approx

Weight:

19.5kg approx

Recommended graphic substrates:

Rigid infill:

5mm thick foam board

Mag taped:

300micron polyester

Visible graphic dimensions (mm):

Rigid infill (3 individual panels):

2 at 1922 (h) x 795 (w) actual
1910 (h) x 783 (w) visible

1 at 1922 (h) x 817 (w) actual
1910 (h) x 805 (w) visible

Rigid infill (6 individual panels):

4 at 945 (h) x 795 (w) actual
933 (h) x 783 (w) visible

2 at 945 (h) x 817 (w) actual
933 (h) x 805 (w) actual

Mag taped graphic (3 panels):

2000 (h) x 850 (w) actual
2000 (h) x 850 (w) visible

additional info

Recommended accessories:



LN112 Literature holder



PS1000 200watt light (see over for fixing method)



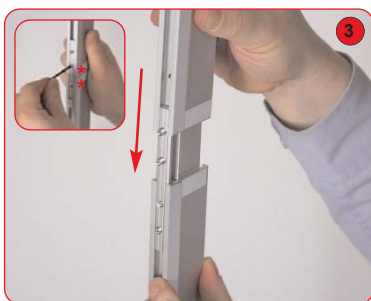
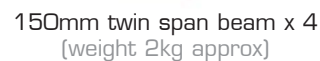
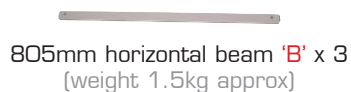
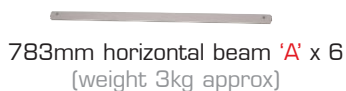
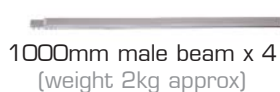
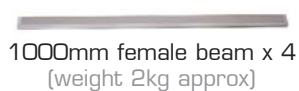
LN111 LCD Bracket



AC504 Wheeled carry case

Assembly Instructions

Linear Kit 6 includes:



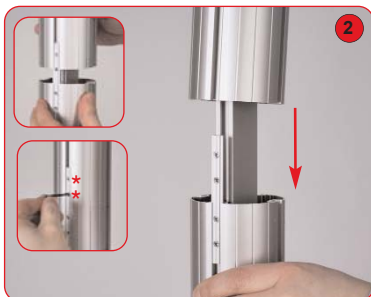
Attach 1000mm male beam to 1000mm female beam. Secure grub screws using a 2mm allen key. Repeat step for remaining vertical beams.



Optional PS1000 lights (not supplied with the kit) can be fitted to the graphics rail using US-LINEAR lighting bracket.



Attach horizontal beams to the vertical frame sides. Tighten locks using a 5mm allen key. If using rigid infill graphics, slide these in to position before tightening beams.



Align and slide female post over male post, tighten both grub screws using a 2mm allen key. Repeat step for 2nd post.



Attach assembled frame to vertical posts using 4 x 150mm twin span beams. Tighten locks using a 5mm Allen key.

NB If applicable, ensure all applied steel tape is facing to the correct side during assembly.



Attach base to male post using M10 bolt and allen key. Ensure clear washer is between base & post. Repeat step for 2nd post.



Attach adjustable foot to bottom horizontal rail. Repeat step for 2nd foot.